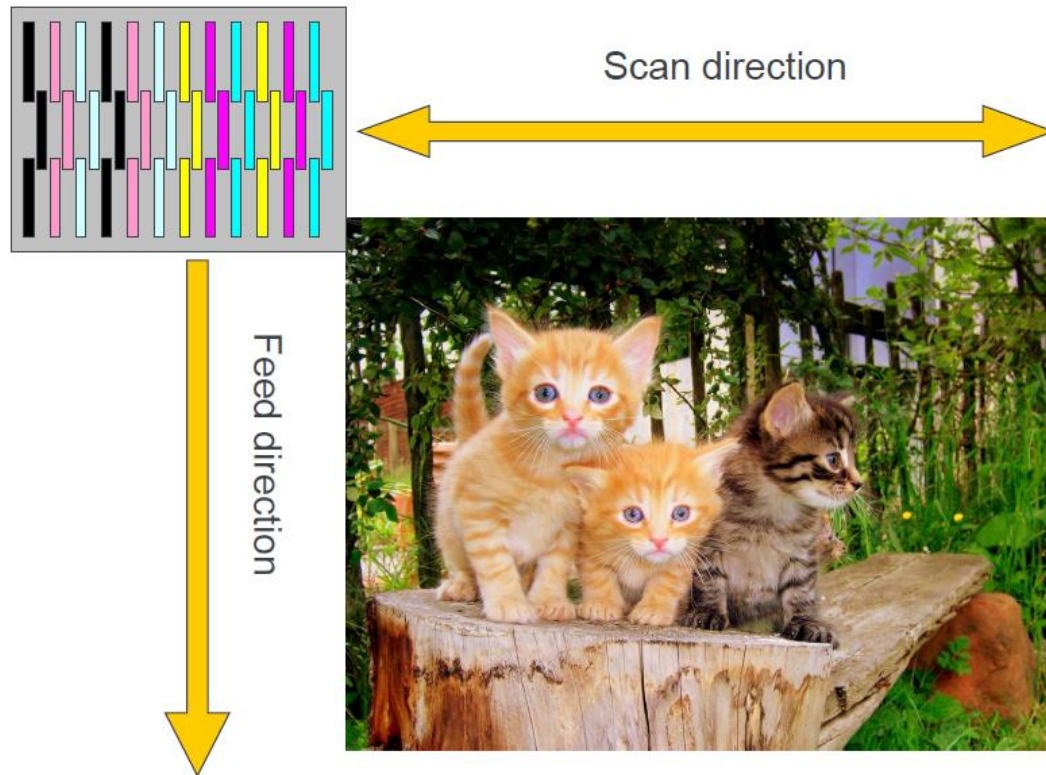


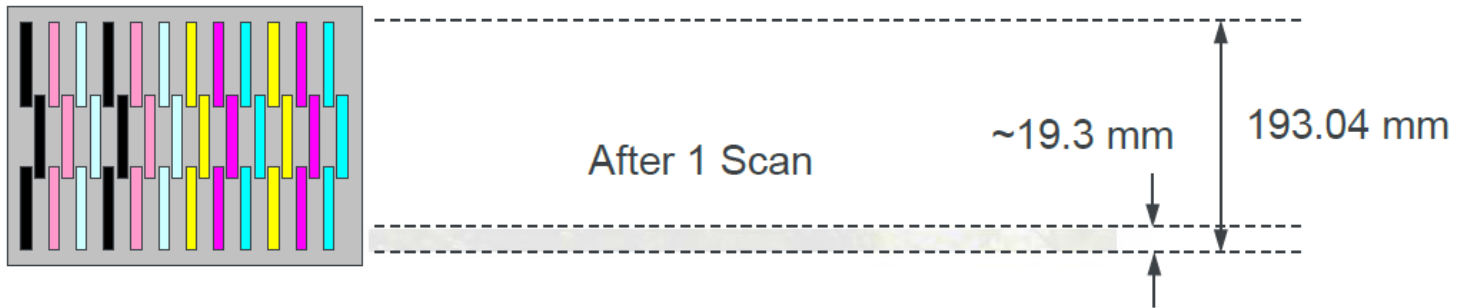
# Scanning Print Head Progress

# Scanning Print Head Progress Per Pass

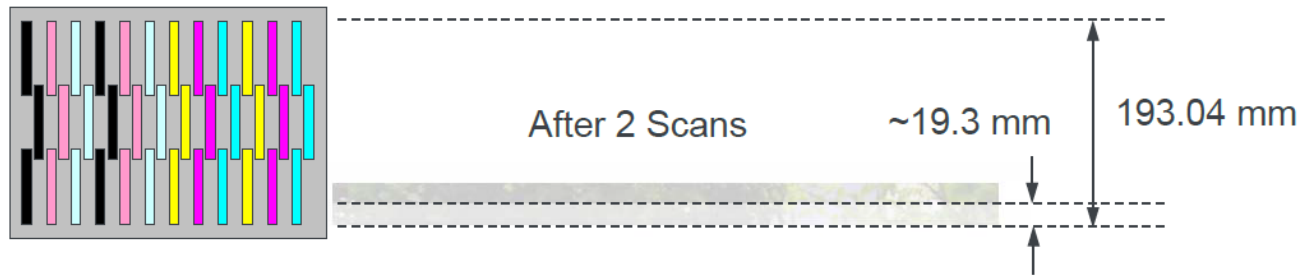


Example:  
- 6c (100dpi)  
- Bild 500dpi  
- 2 Pass

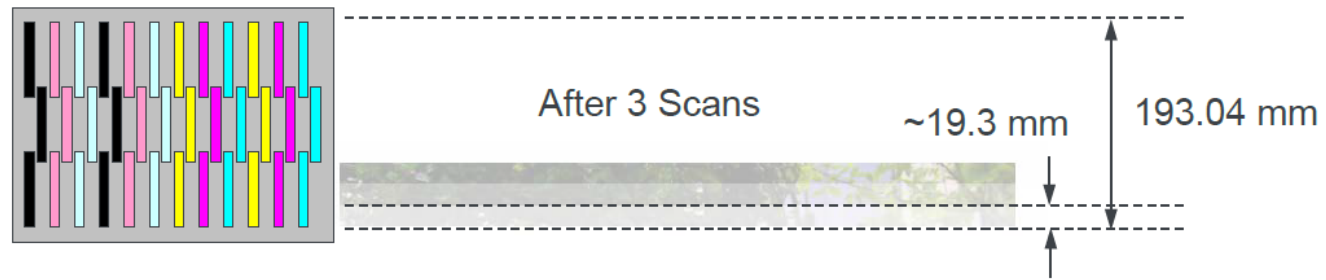
# Scanning Print Head Progress Per Pass



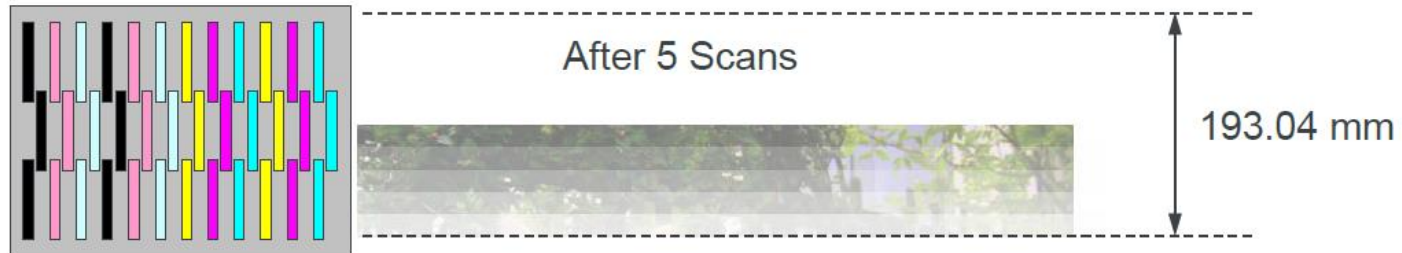
# Scanning Print Head Progress Per Pass



# Scanning Print Head Progress Per Pass

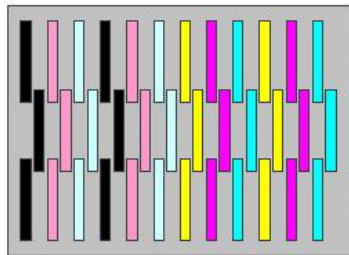


# Scanning Print Head Progress Per Pass



# Scanning Print Head Progress Per Pass

After 10 Scans



193.04 mm

# Scanning Print Head Progress Per Pass

## Multipass printing – Case study

How many scans are needed to complete a portion of an image?

$$\text{Scans} = \text{Passes} \times \frac{\text{dpi}_{\text{Bild}}}{\text{dpi}_{\text{nativ}}}$$

Example:

100 dpi native, 500 dpi Bild, 2 Passes:      10 Scans

